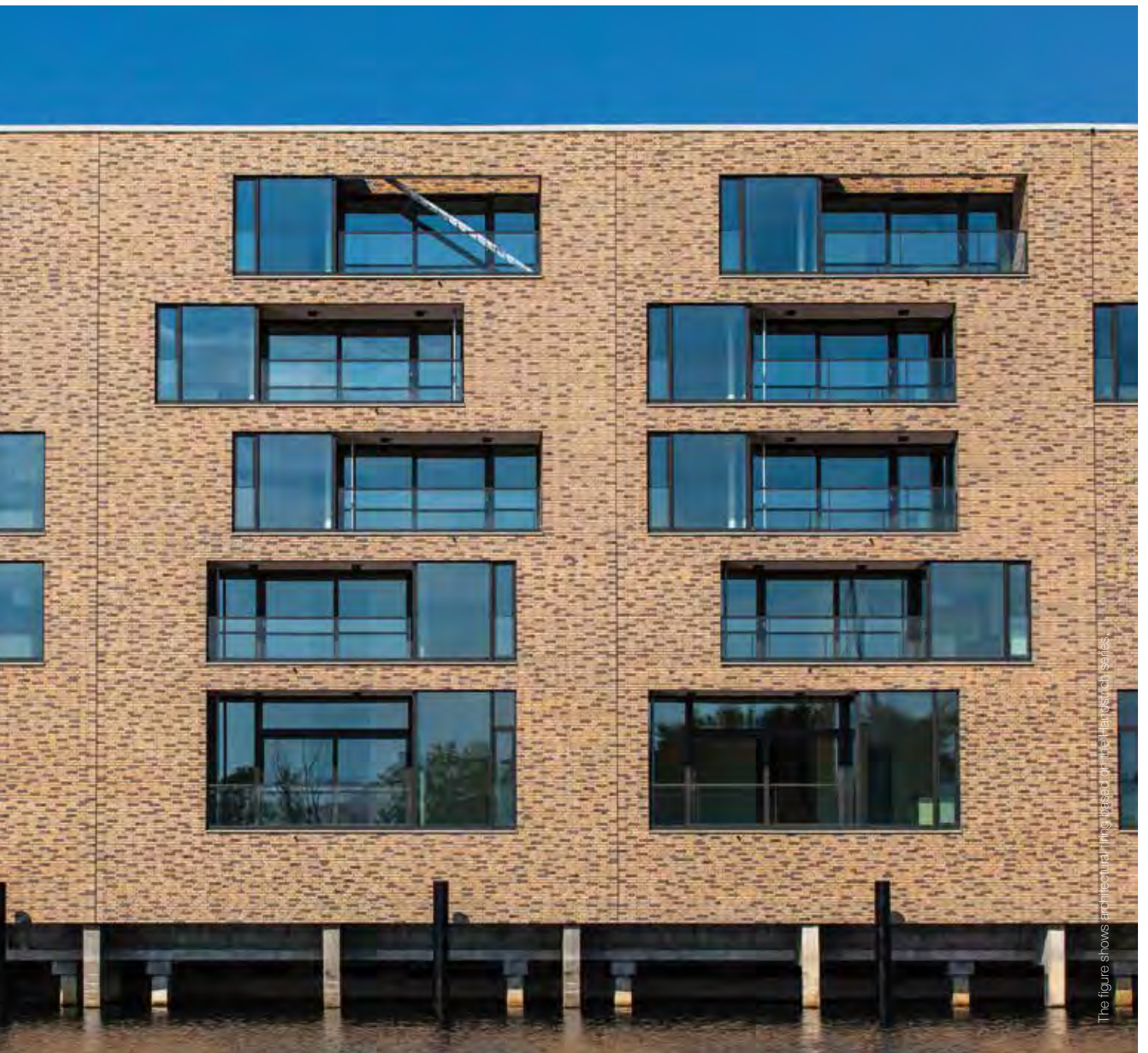


# HANDSTRICH



EMBODIMENT OF OLD VALUES.  
ENVIRONMENTALLY SOUND,  
HIGH-TECHNOLOGY EXTRUSION.





**THE EDGES ARE HAND FORMED. THE SURFACE IS WATER-STRUCK.  
THE APPLICATION IS COSMOPOLITAN.**

Clinker brick slips are moving away from their northern niche and experiencing an international renaissance. Handstrich unites the current spirit of sustainability with the original features of traditional clinker bricks.

As it is only possible to make hand formed edges and water-struck surfaces that are frost resistant and easy to lay and use, in combination with thermal insulation systems, by using extruded clinker brick slips sintered in a furnace at 1.300 °C. Without treatment for water-repellency. Without impregnation. And without wasteful cutting of a full brick. Simply Green Tech and cosmopolitan.

# HANDSTRICH

## HAND FORMED EDGE. WATER-STRUCK SURFACE. BUT GREEN TECH.

### FIRINGS AND FORMAT



**390 champagnersalz**  
Δ < 3 % · DIN EN 14411, Gr. AII<sub>0</sub>



DF



**391 ockererz**  
Δ < 3 % · DIN EN 14411, Gr. AII<sub>0</sub>



DF



**392 rotrost**  
Δ < 3 % · DIN EN 14411, Gr. AII<sub>0</sub>



DF



**393 eisenasche**  
Δ < 3 % · DIN EN 14411, Gr. AII<sub>0</sub>



DF



**394 schwarzkreide**  
Δ < 6 % · DIN EN 14411, Gr. AIII<sub>0</sub> - Part 1



DF

## PRODUCT DETAILS

### HANDSTRICH

DIN EN 14411

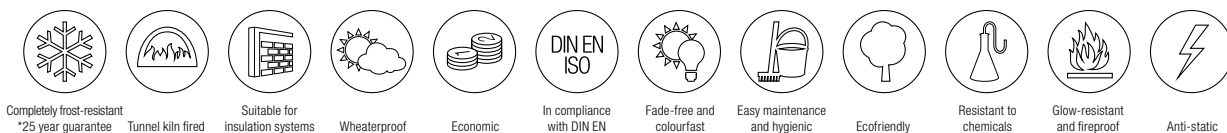


format no.	7650	7651
description	clinker brick slips	corner <sup>1)</sup>
nominal size (cm)	DF	DF
production size (mm)	240 x 52 x 14	240 x 115 x 52 x 14
390 champagnersalz 391 ockererz 392 rotrost 393 eisenasche 394 schwarzkreide	★ PG 434 ●	★ PG 765 ●
pieces per bundle	18	14
pieces per m <sup>2</sup> /m incl. joint	64,00	16,13
pieces per pallet	2.070	910
m <sup>2</sup> /m per bundle	0,28	0,87
m <sup>2</sup> /m per pallet	32,34	56,42
bundles per pallet	115	65
kg per pallet	776	528
kg per piece	0,375	0,580
kg per m <sup>2</sup> /m	24,000	9,355
kg per bundle	6,750	8,120
surcharge	❖	❖

- ★ = Discount on pallets.
- = Normally available ex stock.
- PG = Price group (please see current price list).
- ❖ = Minimum quantity: each open box will incur a surcharge.
- <sup>1)</sup> = The Ströher standard for angular accuracy in angled brick slips is based on the DIN 105 standard for exposed clinker brickwork, but with only 50% of the permissible tolerance values. The Ströher specification is thus +/- 1°. This equates to a maximum deviation of +/- 4 mm on the stretcher side and +/- 2 mm on the header side for a corner with the 240 x 115 mm format.

The formats shown are illustrative drawings and are not binding. All information without guarantee.

\* Ströher is the only German manufacturer offering a 25-year frost resistance guarantee on the following extruded products that have been correctly installed by a qualified professional tiler: Keraplatte® Selected, Keraplatte® Zoé, Keraplatte® Gravel Blend, Keraplatte® Epos, Keraplatte® Aera T, Keraplatte® Aera, Keraplatte® Roccia X, Keraplatte® Roccia, Keraplatte® Asar, Keraplatte® Terra, Keraplatte® Duro, Terrace slab TerioTec® X Profile, Terrace slab TerioTec® X, Terrace Slab TerioTec®, Stalotec®, Brickwerk, Brick 60, Wasserbrand, Kontur, Stiltreu, Riegel 50, Handstrich, Steinlinge, Glanzstücke, Zeitlos, Keraprotect® and Keravette®. Please find further explanations in our general terms and conditions.



Completely frost-resistant  
\*25 year guarantee

Tunnel kiln fired

Suitable for  
insulation systems

Wheatproof

Economic

In compliance  
with DIN EN

Fade-free and  
colourfast

Easy maintenance  
and hygienic

Ecofriendly

Resistant to  
chemicals

Glow-resistant  
and fireproof

Anti-static